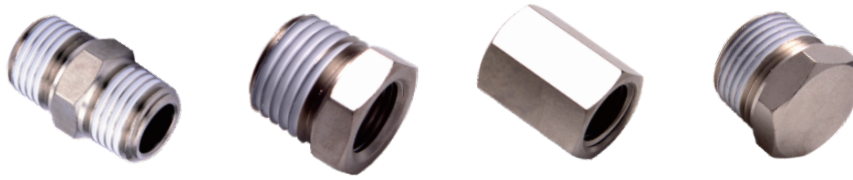


One-touch fittings—threaded type



Ordering code

BB 01 01 - S

① ② ③ ④

① Model

BB: Male connector

Thread connection I Thread connection II

BD: Male & female connector[Note1]

Thread connection I Thread connection II

BU: Double female connector

Thread connection I Thread connection II

BZ: Hexagon head cap plug[Note2]

Thread connection I

② Thread connection I

01: PT1/8
02: PT1/4
03: PT3/8
04: PT1/2

③ Thread connection II

01: PT1/8
02: PT1/4
03: PT3/8
04: PT1/2

④ Material

S: Stainless steel 304

[Note1] For BD series, Thread I is Female thread, Thread II is male thread;

[Note2] For BZ series, no thread II and thread I is male thread.

Configuration table of tubing thread

Product series	Thread connection I	Thread connection II			
		01	02	03	04
BB	01	●	●	●	
	02		●	●	●
	03			●	●
	04				●
BD	01		●	●	●
	02			●	●
	03				●
	04				
BU	01	●			
	02		●		
	03			●	
	04				●
Product series	Thread connection				
	01	02	03	04	
BZ	●	●	●	●	

Specification

Operating pressure range	0~10kgf/cm²(0~1.0MPa)
Negative pressure	-750mmHg(10Torr)
Proof pressure	3.0MPa
Ambient and fluid temperature (°C)	0~150

Product feature

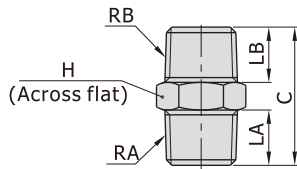
1. Variable models can be widely used in every kind of pneumatic systems.
2. High circulation performance bear the same flow with the volume of the tube inner diameter.
3. Metal fittings can be used in high temperature environment.

Accessories—One-Touch Fittings(Stainless steel) **AIRTAC**

One-touch fittings—threaded type

Dimensions

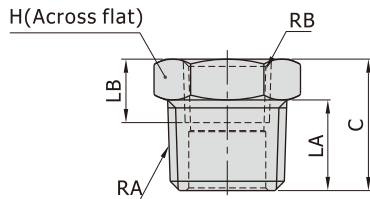
BB Series



[Unit: mm]

Model\Item	RA	RB	LA	LB	C	H	Weight(g)
BB0101-S	PT1/8	PT1/8	7.5	7.5	19.5	10	6
BB0102-S	PT1/4	PT1/8	10	7.5	22.5	14	11
BB0103-S	PT3/8	PT1/8	11	7.5	24	17	17
BB0202-S	PT1/4	PT1/4	10	10	25	14	13.5
BB0203-S	PT3/8	PT1/4	11	10	26.5	17	19
BB0204-S	PT1/2	PT1/4	14	10	30	21	31.5
BB0303-S	PT3/8	PT3/8	11	11	27.5	17	21.5
BB0304-S	PT1/2	PT3/8	14	11	31	21	33
BB0404-S	PT1/2	PT1/2	14	14	34	21	39.5

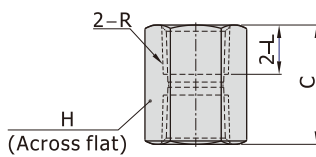
BD Series



[Unit: mm]

Model\Item	RA	RB	LA	LB	C	H	Weight(g)
BD0102-S	PT1/4	PT1/8	10	8	14.5	14	8
BD0103-S	PT3/8	PT1/8	11	8	16	17	15.5
BD0104-S	PT1/2	PT1/8	14	8	19.5	21	31
BD0203-S	PT3/8	PT1/4	11	11	16	17	11.5
BD0204-S	PT1/2	PT1/4	14	11	19.5	21	28
BD0304-S	PT1/2	PT3/8	14	12	19.5	21	20.5

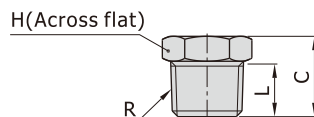
BU Series



[Unit: mm]

Model\Item	R	L	C	H	Weight(g)
BU0101-S	PT1/8	8	17	12	8
BU0202-S	PT1/4	11	23	17	23.5
BU0303-S	PT3/8	12	25	21	36.5
BU0404-S	PT1/2	13.5	28	24	42.5

BZ Series



[Unit: mm]

Model\Item	R	L	C	H	Weight(g)
BZ01-S	PT1/8	7.5	11	10	4
BZ02-S	PT1/4	10	14.5	14	10
BZ03-S	PT3/8	11	16	17	16.5
BZ04-S	PT1/2	14	19.5	21	30

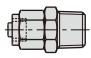
One-touch fittings—threaded type



Ordering code

BKC 06 04 - 01 - S

① ② ③ ④ ⑤

① Model	② Tubing outer diameter	③ Tubing inner diameter	④ Thread connection	⑤ Material
BKC: Straight locknut connector 	04: Φ4mm 06: Φ6mm 08: Φ8mm 10: Φ10mm 12: Φ12mm	25: Φ2.5mm 04: Φ4mm 05: Φ5mm 06: Φ6mm 65: Φ6.5mm 75: Φ7.5mm 08: Φ8mm 09: Φ9mm	M3: M3X0.5 M5: M5X0.8 01: PT1/8 02: PT1/4 03: PT3/8 04: PT1/2	S: Stainless steel 304

Note: When using the tubing Φ8×Φ5.5, the straight lock nut connector of BKC0806 can be used.

Configuration table of tubing and tubing thread

Product series	Tubing outer diameter	Tubing inner diameter	Thread connection					
			M3	M5	01	02	03	04
BKC	04	25	●	●	●			
	06	04			●	●	●	
	08	05			●	●	●	
		06			●	●	●	
	10	65				●	●	●
		75				●	●	●
	12	08				●	●	●
		09				●	●	●

Specification

Operating pressure range	0~10kgf/cm²(0~1.0MPa)
Negative pressure	-750mmHg(10Torr)
Proof pressure	3.0MPa
Ambient and fluid temperature (°C)	0~150

Note: The temperature resistance level of the tubing should be confirmed first when used in high temperature environments.

Product feature

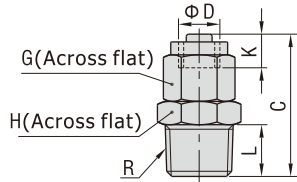
1. Variable models can be widely used in every kind of pneumatic systems.
2. High circulation performance bear the same flow with the volume of the tube inner diameter.
3. Metal fittings can be used in high temperature environments.

One-touch fittings—threaded type

Dimensions

BKC Series

[Unit: mm]



Model\Item	Tubing diameter Φ D		R	L	C	K	G	H	Weight(g)
	O.D	I.D							
BKC0425-M3-S	4	2.5	M3×0.5	3	17	5	8	8	4
BKC0425-M5-S			M5×0.8	3.5	17.5			8	4.5
BKC0425-01-S			PT1/8	7.5	20.5			10	6.5
BKC0604-01-S	6	4	PT1/8	7.5	22	5.5	10	10	9
BKC0604-02-S			PT1/4	10	25.5			14	14.5
BKC0604-03-S			PT3/8	11	27			17	20.5
BKC0805-01-S	8	5	PT1/8	7.5	24	6.5	12	12	11.5
BKC0805-02-S			PT1/4	10	27.5			14	16
BKC0805-03-S			PT3/8	11	29			17	21.5
BKC0806-01-S	8	5.5or6	PT1/8	7.5	24	6.5	12	12	12
BKC0806-02-S			PT1/4	10	27.5			14	15.5
BKC0806-03-S			PT3/8	11	29			17	21.5
BKC1065-02-S	10	6.5	PT1/4	10	30	7.5	15	15	22
BKC1065-03-S			PT3/8	11	31.5			17	26.5
BKC1065-04-S			PT1/2	14	35.5			21	40.5
BKC1075-02-S	10	7.5 or 8	PT1/4	10	30	7.5	15	15	22
BKC1075-03-S			PT3/8	11	31.5			17	26.5
BKC1075-04-S			PT1/2	14	35.5			21	40
BKC1208-02-S	12	8	PT1/4	10	30	7.5	17	17	28
BKC1208-03-S			PT3/8	11	31.5			17	29.5
BKC1208-04-S			PT1/2	14	35.5			21	42.5
BKC1209-02-S	12	9 or 10	PT1/4	10	30	7.5	17	17	28
BKC1209-03-S			PT3/8	11	31.5			17	29
BKC1209-04-S			PT1/2	14	35.5			21	42.5

Installation and application

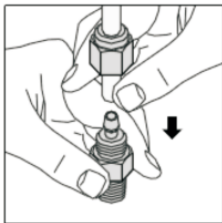


Figure 1

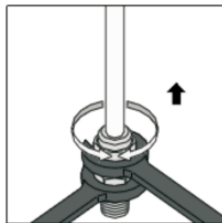


Figure 2

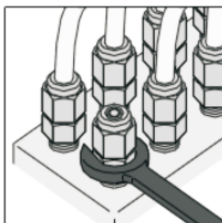


Figure 3

1. Method of inserting or removal a tubing

1.1) Inserting a tubing

Place the locking cap over the tubing, and insert the tubing into the body, then tighten the locking cap. (As figure 1)

1.2) Removing a tubing

Loosen the locking cap first, then remove the tubing. (As figure 2)

2. Method of tightening the connector thread

Tighten the connector with a hex wrench, as shown right.